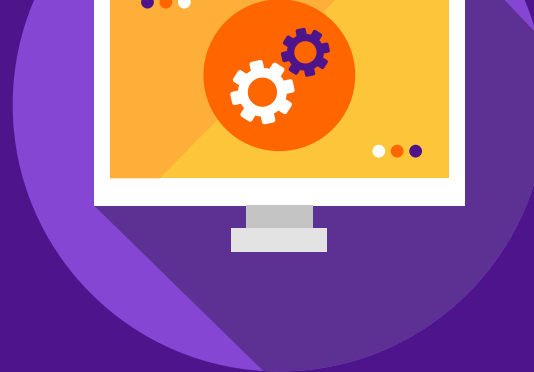


## Three questions to ask your logistics provider before entering a new market



### Do they have the right digital tools to make global shipping easier?

Work smarter and faster, not harder with tools like:



**FedEx Ship Manager™ at [fedex.com](https://www.fedex.com)** automates the entire shipping process, from creating shipments to printing labels



**FedEx® Electronic Trade Documents<sup>^</sup>** allows submission of trade and custom clearance documents digitally



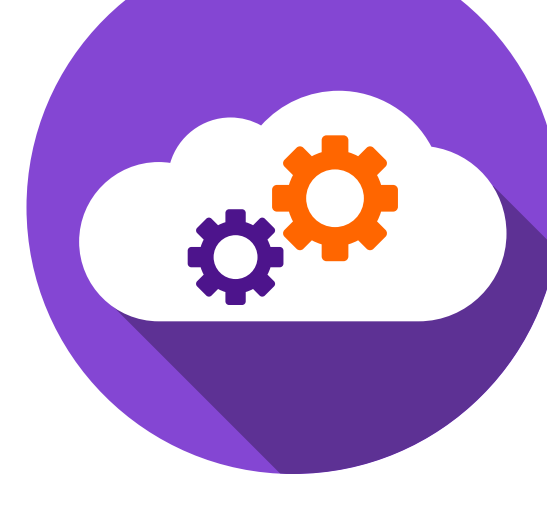
**FedEx® Reporting Online** lets you analyze shipment patterns for strategic business decision making



### Are they e-commerce friendly?

To cater to customers anywhere and enable seamless shipping, choose a provider whose services easily integrate with e-commerce platforms and your own systems

**FedEx APIs<sup>^</sup>** is a convenient way to directly integrate your application with FedEx services - making the handling of packages and transactions speedy

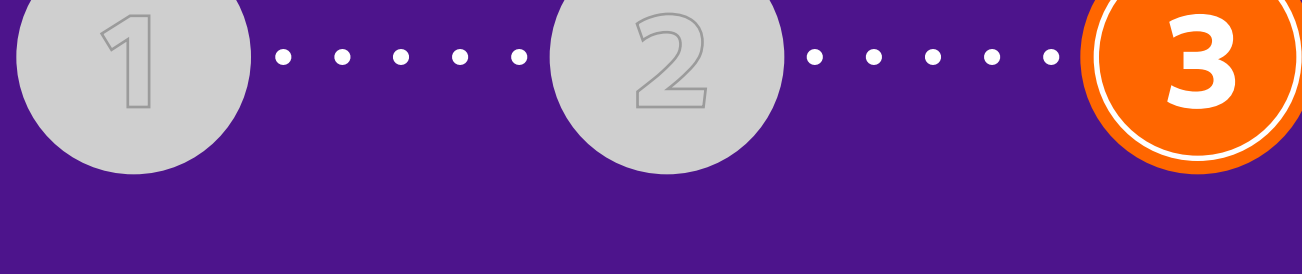


**Carriyo** is a free shipping applications that provides:



- Quick and easy installation of FedEx into your e-store
- Live calculated international and freight shipping rates for your customers
- Label creation within applications
- Automated updates on orders with tracking numbers so customers can easily follow their package

<sup>^</sup>Subject to availability in origin/destination countries  
\* Transit times and international delivery commitments may vary depending on origin and destination. Find out more about the latest service updates.



### Do they provide a wide delivery network and time-critical services<sup>\*^</sup>?

The connected global customer wants quick delivery, and your logistics provider must meet this expectation.

**FedEx International First®**  
Wake up to absolute certainty with our early-day delivery to key global markets - customs cleared, door-to-door.

**FedEx International Priority® Express**  
Delivery by 10:30 or noon in 1 to 3 business days to select markets in Asia, United States, Canada and Europe.



**FedEx International Priority®**  
Delivery typically in 1 to 3 business days depending on destination by end-of-day to more than 220 countries and territories.

**FedEx® International Connect Plus<sup>^</sup>**

As a day-definite and e-commerce delivery service, FICP combines competitive speed with attractive prices to meet global customers' need.



## Expanding your business is a time of celebration.

Don't let the small stuff cloud your big moment - let your logistics provider work for you while you reach greater heights.

[Start fulfilling orders like a pro](#)