



## Information on your Rates and Shipments

Whether your shipments are heavy or lightweight, urgent or less time sensitive, FedEx has the solution for you. Benefit from competitive prices for a highly reliable service and get your shipments to their destination on time.

### How to calculate the charges that apply to your shipment

- Find the zone that your destination/origin falls within in the relevant Zone Tables.
- Choose which service you wish to use.
- Determine the total weight of your shipment to find the transportation rate in the appropriate column.
- Determine whether any fuel surcharge or other surcharges apply to your shipment.

### Rate Information

The transportation rates are effective from 6 January 2025. The transportation rates and services offered by FedEx may be amended, modified or discontinued by FedEx at any time with or without notice. They may also vary depending upon the point of or time of collection or delivery, shipment size or weight or commodity type.

### FedEx Terms and Conditions

All shipments are subject to the FedEx Terms and Conditions of Carriage (“Conditions of Carriage”) published and maintained at the applicable [fedex.com](https://www.fedex.com) site. For shipments originating in Hungary, you can find the relevant Conditions of Carriage here: [fedex.com/hu\\_english/services/terms](https://www.fedex.com/hu_english/services/terms). The information on your rates and shipments set out in this document is in part extracted from the Conditions of Carriage and provided for reference purposes only. In the event of any conflict, the online Conditions of Carriage prevail.

### Duties, Taxes and Additional Charges

Duties and taxes may apply to certain shipments. Such duties and taxes will be billed to the recipient where allowed, unless otherwise requested by the sender. In the event FedEx disburses duties, taxes or other fees to a customs agency to complete clearance of certain items through customs, the payer will be assessed a clearance service fee, which may vary depending on the destination country. For more information, see [fedex.com/hu\\_english/ancillaryservices](https://www.fedex.com/hu_english/ancillaryservices).

Additional charges may apply to certain shipments including fuel and other surcharges, ancillary charges, Declared Value for Carriage charges, return charges, special handling fees, import and export charges, and other costs reasonably incurred by FedEx relating to the transport of a shipment. For more information see [fedex.com/hu\\_english/ratesinformation](https://www.fedex.com/hu_english/ratesinformation). All rates, surcharges and other applicable charges quoted exclude any value added tax (VAT) that may be applicable and which would be added to the charges at the rate in force at the time.

### Exchange Fee

An additional exchange fee may apply for the conversion of rates in currencies other than the currency in which the payer’s account is billed.



## Weight and Dimensions

Dimensional weight is the amount of space a package occupies in relation to its actual weight. For each shipment, FedEx charges based on the dimensional weight or the actual weight, whichever is greater. FedEx uses the following volumetric calculation to determine the dimensional weight in kg per package: length x height x width in cm/5 000.<sup>(1)</sup> Dimensional weight does not apply to shipments in FedEx packaging, however, in case FedEx® Pak in Europe exceeds 0.0154m<sup>3</sup>, dimensional weight may apply. FedEx® Box packaging is subject to a minimum weight charge.

The maximum dimensions of packages are defined by the features of service. Please refer to [fedex.com](https://www.fedex.com) for the maximum dimensions.

Any package exceeding these standard measurements is automatically considered as FedEx International Priority® Freight, FedEx International Economy® Freight, FedEx® Regional Economy Freight or FedEx® Priority Freight, and billed accordingly.

A minimum billable weight of 68kg applies to FedEx International Priority Freight, FedEx International Economy Freight, FedEx Regional Economy Freight and FedEx Priority Freight shipments.

A minimum billable weight applies to shipments packaged in FedEx boxes and tubes, except for FedEx® 10kg Box and FedEx® 25kg Box.<sup>(2)</sup> The values are defined as follows:

FedEx Box (all sizes)	1 kg
FedEx® Tube	4 kg

A flat rate applies up to 10 kg and 25 kg for FedEx 10kg Box and FedEx 25kg Box respectively. Above this weight an increment for each additional kilogram is added.

## FedEx Limited Liability

The liability of FedEx for loss, damage, delay or any other claim in connection with a shipment will be, in most cases, limited by the applicable international conventions or national transport laws. In some cases, liability may be excluded altogether, and subject to compliance with time limits and other requirements set out in the applicable Conditions of Carriage.

For full details of the liability of FedEx please read the applicable Conditions of Carriage carefully. If liability is accepted, the limit may vary depending upon the service used.

## Maximum Liability: Declared Value for Carriage

The sender may elect to pay an additional charge to specify a Declared Value for Carriage on the Air Waybill or Waybill, above the standard limits of liability. FedEx does not provide a cargo all-risks insurance.

A fee will be assessed for each additional US\$100 (or part thereof) of liability that FedEx accepts above the standard limits of liability. A more detailed quote can be gained when booking a shipment. The Declared Value for Carriage is limited to a maximum amount and may vary by location.

For more information including latest amounts in local currency, please see details in the Value Added Services and Surcharges document.

For FedEx® International Connect Plus, some details in the Maximum Liability section do not apply to this service including Declared Value for Carriage for FedEx Envelope or FedEx Pak.

*(1) For FedEx® Regional Economy and FedEx Regional Economy Freight, DIM divisor is 4 000. FedEx Regional Economy and FedEx Regional Economy Freight are our intra-Europe economy services and are available to selected customers only. For further information, please contact your local Sales Representative.*

*(2) FedEx boxes and tubes as well as FedEx 10kg Box and FedEx 25kg Box are not available for shipping with our domestic services. For further information, please contact your local Sales Representative.*

FedEx offers a range of solutions to suit your timing and budget. Choose one of our express services with different options of delivery time during the day for your import shipments. Or select an economy service and choose a suitable delivery date, while saving on your costs.

# EUROPE

## URGENT\*

- IPE** ▶ FedEx International Priority® Express
- IP** ▶ FedEx International Priority®
- IPF** ▶ FedEx International Priority® Freight

## LESS URGENT\*

- IE** ▶ FedEx International Economy®
- IEF** ▶ FedEx International Economy® Freight
- RE** ▶ FedEx® Regional Economy
- REF** ▶ FedEx® Regional Economy Freight

ORIGIN	ZONE	IPE	IP	IPF	IE	IEF	RE	REF
Albania	X	✓	✓	-	-	-	-	-
Austria (EU)	R	✓	✓	✓	-	-	✓	✓
Belgium (EU)	T	✓	✓	✓	-	-	✓	✓
Bosnia-Herzegovina	X	✓	✓	✓	-	-	-	-
Bulgaria (EU)	V	✓	✓	✓	✓	✓	-	-
Croatia (EU)	T	✓	✓	✓	✓	✓	-	-
Cyprus (EU)	X	✓	✓	✓	✓	✓	-	-
Czech Republic (EU)	R	✓	✓	✓	-	-	✓	✓
Denmark (EU)	U	✓	✓	✓	-	-	✓	✓
Estonia (EU)	V	✓	✓	✓	-	-	✓	✓
Finland (EU)	U	✓	✓	✓	-	-	✓	✓
France (EU)	T	✓	✓	✓	-	-	✓	✓
Germany (EU)	S	✓	✓	✓	-	-	✓	✓
Gibraltar	U	✓	✓	-	-	-	-	-
Greece (EU)	U	✓	✓	✓	-	-	✓	✓
Iceland	X	✓	✓	✓	-	-	-	-
Ireland (EU)	T	✓	✓	✓	-	-	✓	✓
Italy (EU)	T	✓	✓	✓	-	-	✓	✓
Latvia (EU)	V	✓	✓	✓	-	-	✓	✓
Liechtenstein	W	✓	✓	-	-	-	-	-
Lithuania (EU)	V	✓	✓	✓	-	-	✓	✓
Luxembourg (EU)	T	✓	✓	✓	-	-	✓	✓
Malta (EU)	X	✓	✓	✓	✓	✓	-	-
Moldova	X	✓	✓	✓	✓	✓	-	-
Monaco	T	✓	✓	✓	-	-	-	-
Montenegro	X	✓	✓	-	-	-	-	-

ORIGIN	ZONE	IPE	IP	IPF	IE	IEF	RE	REF
Netherlands (EU)	T	✓	✓	✓	-	-	✓	✓
North Macedonia	X	✓	✓	-	-	-	-	-
Norway	W	✓	✓	✓	-	-	✓	✓
Poland (EU)	S	✓	✓	✓	-	-	✓	✓
Portugal (EU)	V	✓	✓	✓	✓	✓	-	-
Romania (EU)	S	✓	✓	✓	-	-	✓	✓
San Marino	T	✓	✓	✓	✓	✓	-	-
Serbia	X	✓	✓	✓	✓	✓	-	-
Slovak Republic (EU)	R	✓	✓	✓	✓	✓	-	-
Slovenia (EU)	T	✓	✓	✓	-	-	✓	✓
Spain (EU)	U	✓	✓	✓	-	-	✓	✓
Sweden (EU)	V	✓	✓	✓	-	-	✓	✓
Switzerland	W	✓	✓	✓	-	-	✓	✓
Turkey	X	✓	✓	✓	✓	-	-	-
Ukraine	X	-	✓	-	-	-	-	-
United Kingdom	Y	✓	✓	✓	-	-	✓	✓
Vatican City	T	✓	✓	✓	✓	✓	-	-

✓ Service available - Service not available (EU) Part of the European Union

The service availability described in this document might vary by postal code and throughout the year.

\* For FedEx International First® and FedEx® International Connect Plus zoning information, please refer to the dedicated FIF and FICP documents.

Benefit from our  
express delivery  
by mid-day\*



## FedEx International Priority® Express (IPE)

WEIGHT (KG)	ZONE R	ZONE S	ZONE T	ZONE U	ZONE V	ZONE W	ZONE X	ZONE Y
	HUF	HUF	HUF	HUF	HUF	HUF	HUF	HUF

### Rates when using FedEx® Envelope/FedEx® Pak (0,5 - 2,5 kg)

FedEx Envelope								
0,5	21 239	21 395	23 311	24 611	25 469	26 516	30 948	25 981
FedEx Pak								
0,5	21 346	21 556	23 444	24 798	25 613	26 667	31 126	26 118
1	22 077	23 166	25 660	27 039	27 981	29 065	33 761	28 448
1,5	22 808	24 776	27 876	29 280	30 348	31 463	36 396	30 778
2	23 539	26 386	30 092	31 521	32 715	33 861	39 031	33 108
2,5	24 270	27 996	32 308	33 762	35 082	36 259	41 666	35 438

### Rates when using FedEx® 10kg and 25kg Box

FedEx 10kg Box								
≤ 10	31 415	42 093	51 012	52 868	54 795	56 646	64 429	55 198
Additional kg	682	3 508	4 712	4 696	5 758	5 954	6 518	4 824
FedEx 25kg Box								
≤ 25	42 027	77 357	98 486	100 556	109 615	113 240	126 633	104 398
Additional kg	626	3 730	4 626	4 876	5 758	5 952	6 518	4 784

### Rates when using other packaging material

0,5	22 450	22 546	24 568	26 038	26 920	27 936	32 672	27 346
1	23 265	24 323	26 972	28 478	29 455	30 546	35 559	29 878
1,5	24 080	26 100	29 376	30 917	31 989	33 156	38 446	32 410
2	24 895	27 877	31 780	33 356	34 523	35 766	41 333	34 942
2,5	25 710	29 654	34 184	35 795	37 057	38 376	44 220	37 474
3	26 525	31 431	36 588	38 234	39 591	40 986	47 107	40 006
3,5	27 340	33 208	38 992	40 673	42 125	43 596	49 994	42 538
4	28 155	34 985	41 396	43 112	44 659	46 206	52 881	45 070
4,5	28 970	36 762	43 800	45 551	47 193	48 816	55 768	47 602
5	29 785	38 539	46 204	47 990	49 727	51 426	58 655	50 134
5,5	30 600	40 316	48 608	50 429	52 261	54 036	61 542	52 666
6	31 415	42 093	51 012	52 868	54 795	56 646	64 429	55 198
6,5	32 230	43 870	53 416	55 307	57 329	59 256	67 316	57 730
7	33 045	45 647	55 820	57 746	59 863	61 866	70 203	60 262
7,5	33 860	47 424	58 224	60 185	62 397	64 476	73 090	62 794
8	34 675	49 201	60 628	62 624	64 931	67 086	75 977	65 326
8,5	35 490	50 978	63 032	65 063	67 465	69 696	78 864	67 858
9	36 305	52 755	65 436	67 502	69 999	72 306	81 751	70 390
9,5	37 120	54 532	67 840	69 941	72 533	74 916	84 638	72 922
10	37 935	56 309	70 244	72 380	75 067	77 526	87 525	75 454
Additional 0,5 kg	341	1 754	2 359	2 348	2 879	2 978	3 259	2 412
21	45 409	95 017	121 976	124 135	138 405	143 000	159 223	128 498
Additional 0,5 kg	313	1 865	2 313	2 438	2 879	2 976	3 259	2 392
30	51 043	128 587	163 610	168 019	190 227	196 568	217 885	171 554
Additional 0,5 kg	365	1 865	2 313	2 438	3 086	3 077	3 471	2 392
45	61 935	184 537	233 000	241 159	282 720	288 878	322 015	243 314
Additional 0,5 kg	363	1 865	2 313	2 438	3 083	3 077	3 471	2 392
70,5	80 443	279 652	350 963	365 497	436 870	445 805	499 036	365 306

Rate per kg (multiply by total shipment weight)								
71-99	1 133	4 048	5 049	5 207	6 155	6 392	7 258	5 212
100-299	1 133	4 048	5 049	5 207	6 155	6 392	7 258	5 212
300-499	1 133	4 048	5 049	5 207	6 155	6 392	7 258	5 212
500-999	1 133	4 048	5 049	5 207	6 155	6 392	7 258	5 212
1 000+	1 133	4 048	5 049	5 207	6 155	6 392	7 258	5 212

Any shipment with a weight between any of the above weight bands will be charged at the higher weight band rate.

\*Availability of services and transit times may vary depending on origin and destination. Terms and conditions apply – visit [fedex.com](https://www.fedex.com) for full details of our services.





## FedEx International Priority® (IP)

WEIGHT (KG)	ZONE R	ZONE S	ZONE T	ZONE U	ZONE V	ZONE W	ZONE X	ZONE Y
	HUF	HUF	HUF	HUF	HUF	HUF	HUF	HUF

### Rates when using FedEx® Envelope/FedEx® Pak (0,5 - 2,5 kg)

FedEx Envelope								
<b>0,5</b>	20 228	20 376	22 201	23 439	24 256	25 254	29 475	24 744
FedEx Pak								
<b>0,5</b>	20 330	20 529	22 328	23 617	24 394	25 397	29 643	24 874
<b>1</b>	21 025	22 062	24 438	25 751	26 649	27 681	32 153	27 094
<b>1,5</b>	21 720	23 595	26 548	27 885	28 904	29 965	34 663	29 314
<b>2</b>	22 415	25 128	28 658	30 019	31 159	32 249	37 173	31 534
<b>2,5</b>	23 110	26 661	30 768	32 153	33 414	34 533	39 683	33 754

### Rates when using FedEx® 10kg and 25kg Box

FedEx 10kg Box								
<b>≤ 10kg</b>	29 917	40 085	48 577	50 352	52 193	53 952	61 367	52 576
Additional kg	657	3 342	4 488	4 476	5 484	5 670	6 208	4 594
FedEx 25kg Box								
<b>≤ 25kg</b>	40 032	73 673	93 787	95 782	104 409	107 860	120 615	99 436
Additional kg	596	3 554	4 406	4 644	5 484	5 670	6 208	4 556

### Rates when using other packaging material

<b>0,5</b>	21 381	21 472	23 398	24 799	25 639	26 606	31 116	26 044
<b>1</b>	22 157	23 165	25 687	27 122	28 053	29 092	33 867	28 456
<b>1,5</b>	22 933	24 857	27 976	29 445	30 467	31 578	36 617	30 868
<b>2</b>	23 709	26 549	30 265	31 768	32 881	34 064	39 367	33 280
<b>2,5</b>	24 485	28 241	32 554	34 091	35 295	36 550	42 117	35 692
<b>3</b>	25 261	29 933	34 843	36 414	37 709	39 036	44 867	38 104
<b>3,5</b>	26 037	31 625	37 132	38 737	40 123	41 522	47 617	40 516
<b>4</b>	26 813	33 317	39 421	41 060	42 537	44 008	50 367	42 928
<b>4,5</b>	27 589	35 009	41 710	43 383	44 951	46 494	53 117	45 340
<b>5</b>	28 365	36 701	43 999	45 706	47 365	48 980	55 867	47 752
<b>5,5</b>	29 141	38 393	46 288	48 029	49 779	51 466	58 617	50 164
<b>6</b>	29 917	40 085	48 577	50 352	52 193	53 952	61 367	52 576
<b>6,5</b>	30 693	41 777	50 866	52 675	54 607	56 438	64 117	54 988
<b>7</b>	31 469	43 469	53 155	54 998	57 021	58 924	66 867	57 400
<b>7,5</b>	32 245	45 161	55 444	57 321	59 435	61 410	69 617	59 812
<b>8</b>	33 021	46 853	57 733	59 644	61 849	63 896	72 367	62 224
<b>8,5</b>	33 797	48 545	60 022	61 967	64 263	66 382	75 117	64 636
<b>9</b>	34 573	50 237	62 311	64 290	66 677	68 868	77 867	67 048
<b>9,5</b>	35 349	51 929	64 600	66 613	69 091	71 354	80 617	69 460
<b>10</b>	36 125	53 621	66 889	68 936	71 505	73 840	83 367	71 872
Additional 0,5 kg	332	1 671	2 247	2 239	2 742	2 835	3 104	2 297
<b>21</b>	43 255	90 491	116 159	118 237	131 829	136 210	151 655	122 387
Additional 0,5 kg	298	1 777	2 203	2 322	2 742	2 835	3 104	2 278
<b>30</b>	48 619	122 477	155 813	160 033	181 185	187 240	207 527	163 391
Additional 0,5 kg	350	1 777	2 203	2 322	2 936	2 931	3 305	2 278
<b>45</b>	59 003	175 787	221 903	229 693	269 265	275 170	306 677	231 731
Additional 0,5 kg	346	1 777	2 203	2 322	2 936	2 931	3 305	2 278
<b>70,5</b>	76 303	266 414	334 256	348 115	416 178	424 651	475 232	347 909

Rate per kg (multiply by total shipment weight)								
<b>71-99</b>	1 079	3 855	4 809	4 960	5 862	6 087	6 912	4 964
<b>100-299</b>	1 079	3 855	4 809	4 960	5 862	6 087	6 912	4 964
<b>300-499</b>	1 079	3 855	4 809	4 960	5 862	6 087	6 912	4 964
<b>500-999</b>	1 079	3 855	4 809	4 960	5 862	6 087	6 912	4 964
<b>1 000 +</b>	1 079	3 855	4 809	4 960	5 862	6 087	6 912	4 964

## FedEx International Priority® Freight (IPF)

WEIGHT (KG)	ZONE R	ZONE S	ZONE T	ZONE U	ZONE V	ZONE W	ZONE X	ZONE Y
	HUF	HUF	HUF	HUF	HUF	HUF	HUF	HUF
<b>68</b>	76 092	274 312	344 284	355 232	419 764	435 812	495 108	369 104
<b>68,5</b>	77 211	278 346	349 347	360 456	425 937	442 221	502 389	374 532
<b>69</b>	77 211	278 346	349 347	360 456	425 937	442 221	502 389	374 532
<b>69,5</b>	78 330	282 380	354 410	365 680	432 110	448 630	509 670	379 960
<b>70</b>	78 330	282 380	354 410	365 680	432 110	448 630	509 670	379 960
<b>70,5</b>	79 449	286 414	359 473	370 904	438 283	455 039	516 951	385 388
Rate per kg (multiply by total shipment weight)								
<b>71-99</b>	1 119	4 034	5 063	5 224	6 173	6 409	7 281	5 428
<b>100-299</b>	1 119	4 034	5 063	5 224	6 173	6 409	7 281	5 428
<b>300-499</b>	1 119	4 034	5 063	5 224	6 173	6 409	7 281	5 428
<b>500-999</b>	1 119	4 034	5 063	5 224	6 173	6 409	7 281	5 428
<b>1 000 +</b>	1 119	4 034	5 063	5 224	6 173	6 409	7 281	5 428

Shipments must be properly palletized and shrink-wrapped. See the packaging guidelines on [fedex.com](https://www.fedex.com). Any shipment with a weight between any of the above weight bands will be charged at the higher weight band rate.

\* Availability of services and transit times may vary depending on origin and destination. Terms and conditions apply – visit [fedex.com](https://www.fedex.com) for full details of our services.







When timing is everything, use our early morning delivery services\* for your shipments in Europe

## FedEx International First® (FIF)

ORIGIN	ZONE	ORIGIN	ZONE	ORIGIN	ZONE
Austria (EU)	R	Greece (EU)	U	Poland (EU)	S
Belgium (EU)	T	Ireland (EU)	T	Romania (EU)	S
Czech Republic (EU)	R	Italy (EU)	T	Slovenia (EU)	T
Denmark (EU)	U	Latvia (EU)	V	Spain (EU)	U
Estonia (EU)	V	Lithuania (EU)	V	Sweden (EU)	V
Finland (EU)	U	Luxembourg (EU)	T	Switzerland	W
France (EU)	T	Netherlands (EU)	T	United Kingdom	Y
Germany (EU)	S	Norway	W		

(EU) = Part of the European Union.

WEIGHT (KG)	ZONE R	ZONE S	ZONE T	ZONE U	ZONE V	ZONE W	ZONE Y
	HUF	HUF	HUF	HUF	HUF	HUF	HUF

### Rates when using FedEx® Envelope/FedEx® Pak (0,5 - 2,5 kg)

FedEx Envelope							
0,5	36 978	37 333	39 251	40 552	41 410	42 460	41 924
FedEx Pak							
0,5	37 083	37 494	39 384	40 739	41 555	42 609	42 061
1	38 133	39 829	42 599	43 989	44 992	46 090	45 443
1,5	39 183	42 164	45 814	47 239	48 428	49 570	48 825
2	40 233	44 499	49 029	50 489	51 864	53 050	52 207
2,5	41 283	46 834	52 244	53 739	55 300	56 530	55 589

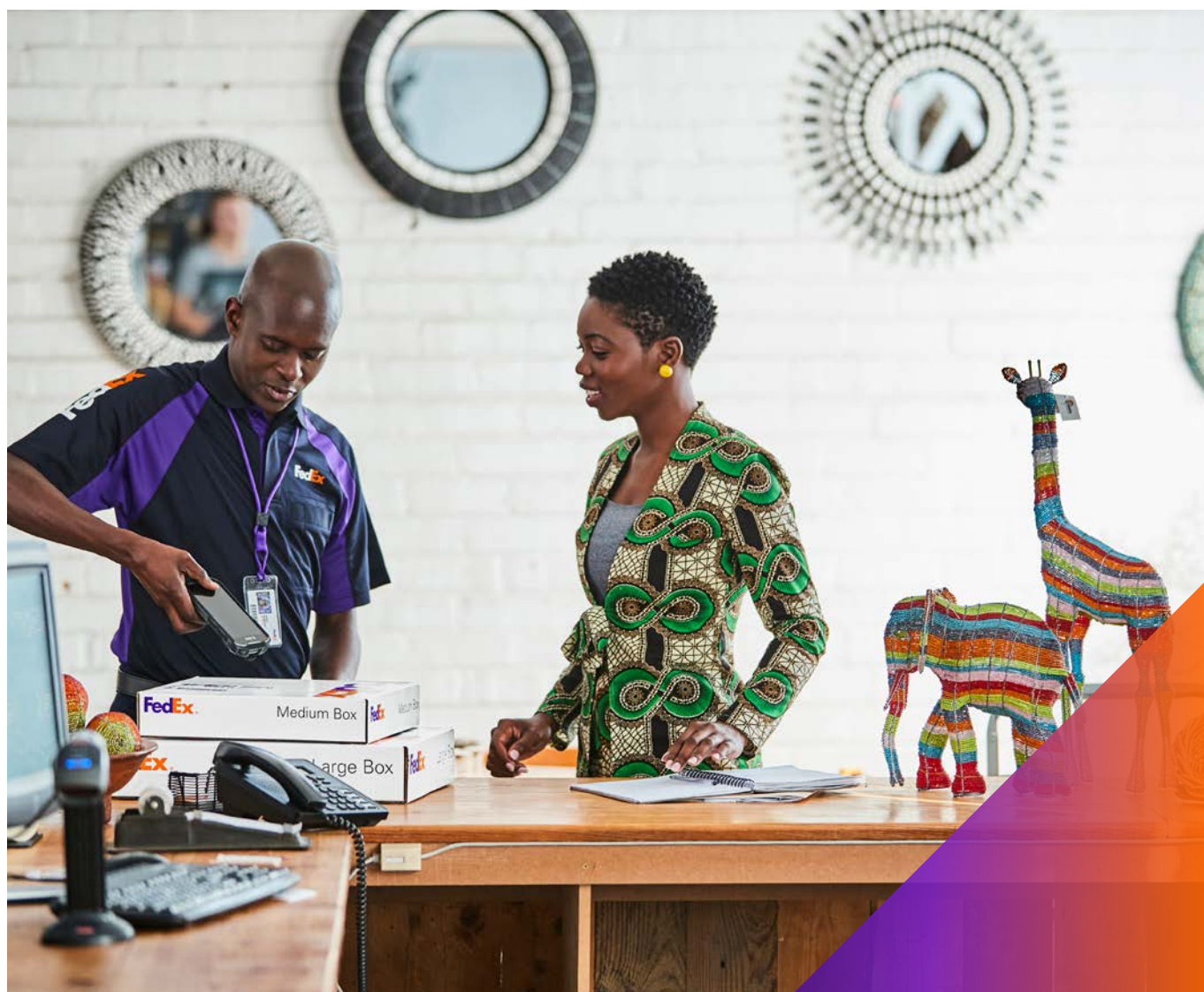
### Rates when using other packaging material

0,5	38 178	38 485	40 509	41 977	42 864	43 880	43 289
1	39 349	41 064	43 997	45 517	46 542	47 666	46 962
1,5	40 520	43 642	47 485	49 057	50 220	51 452	50 635
2	41 691	46 220	50 973	52 597	53 898	55 238	54 308
2,5	42 862	48 798	54 461	56 137	57 576	59 024	57 981
3	44 034	51 376	57 949	59 677	61 254	62 812	61 654
3,5	45 205	53 954	61 437	63 217	64 932	66 598	65 327
4	46 376	56 532	64 925	66 757	68 610	70 384	69 000
4,5	47 547	59 110	68 413	70 297	72 288	74 170	72 673
5	48 718	61 688	71 901	73 837	75 966	77 956	76 346
5,5	49 889	64 269	75 389	77 378	79 644	81 742	80 020
6	51 060	66 847	78 877	80 919	83 322	85 528	83 694
6,5	52 231	69 425	82 365	84 460	87 000	89 314	87 368
7	53 402	72 003	85 853	88 001	90 678	93 100	91 042
7,5	54 573	74 581	89 341	91 542	94 356	96 886	94 716
8	55 744	77 159	92 829	95 083	98 034	100 672	98 390
8,5	56 915	79 737	96 317	98 624	101 712	104 458	102 064
9	58 086	82 315	99 805	102 165	105 390	108 244	105 738
9,5	59 257	84 893	103 293	105 706	109 068	112 030	109 412

WEIGHT (KG)	ZONE R	ZONE S	ZONE T	ZONE U	ZONE V	ZONE W	ZONE Y
<b>10</b>	HUF 60 428	HUF 87 471	HUF 106 781	HUF 109 247	HUF 112 746	HUF 115 816	HUF 113 086
Additional 0,5 kg	491	2 546	3 414	3 407	4 180	4 323	3 498
<b>21</b>	71 189	143 644	181 832	184 333	204 706	210 859	190 024
Additional 0,5 kg	450	2 707	3 357	3 539	4 180	4 320	3 473
<b>30</b>	79 289	192 370	242 258	248 035	279 946	288 619	252 538
Additional 0,5 kg	524	2 710	3 357	3 540	4 417	4 470	3 473
<b>45</b>	94 777	273 583	342 969	354 235	412 464	422 603	356 729
Additional 0,5 kg	516	2 707	3 357	3 540	4 417	4 466	3 473
<b>70,5</b>	121 093	411 640	514 176	534 775	637 731	650 369	533 852
Rate per kg (multiply by total shipment weight)							
<b>71-99</b>	1 720	5 839	7 294	7 587	9 048	9 227	7 573
<b>100-299</b>	1 720	5 839	7 294	7 587	9 048	9 227	7 573
<b>300-499</b>	1 720	5 839	7 294	7 587	9 048	9 227	7 573
<b>500-999</b>	1 720	5 839	7 294	7 587	9 048	9 227	7 573
<b>1 000 +</b>	1 720	5 839	7 294	7 587	9 048	9 227	7 573

Shipments must be properly packed. See the packaging guidelines on [fedex.com](https://www.fedex.com). Any shipment with a weight between any of the above weight bands will be charged at the higher weight band rate.

\* Availability of services and transit times may vary depending on origin and destination. Terms and conditions apply – visit [fedex.com](https://www.fedex.com) for full details of our services.







Save on your less urgent shipments with our economy services

## FedEx® Regional Economy (RE)

WEIGHT (KG)	ZONE R	ZONE S	ZONE T	ZONE U	ZONE V	ZONE W	ZONE Y
	HUF	HUF	HUF	HUF	HUF	HUF	HUF
0,5	15 176	17 788	22 286	23 535	24 365	25 258	24 418
1	15 176	17 788	22 286	23 535	24 365	25 258	24 418
1,5	15 176	17 788	22 286	23 535	24 365	25 258	24 418
2	15 176	17 788	22 286	23 535	24 365	25 258	24 418
2,5	15 176	17 788	22 286	23 535	24 365	25 258	24 418
3	15 176	17 788	22 286	23 535	24 365	25 258	24 418
3,5	15 176	17 788	22 286	23 535	24 365	25 258	24 418
4	15 176	17 788	22 286	23 535	24 365	25 258	24 418
4,5	15 176	17 788	22 286	23 535	24 365	25 258	24 418
5	15 176	17 788	22 286	23 535	24 365	25 258	24 418
5,5	16 318	19 175	23 908	25 397	26 364	27 396	26 041
6	16 318	19 175	23 908	25 397	26 364	27 396	26 041
6,5	17 460	20 561	25 531	27 259	28 363	29 534	27 664
7	17 460	20 561	25 531	27 259	28 363	29 534	27 664
7,5	18 602	21 947	27 154	29 121	30 362	31 672	29 287
8	18 602	21 947	27 154	29 121	30 362	31 672	29 287
8,5	19 744	23 333	28 777	30 983	32 361	33 810	30 910
9	19 744	23 333	28 777	30 983	32 361	33 810	30 910
9,5	20 886	24 719	30 400	32 845	34 360	35 948	32 533
10	20 886	24 719	30 400	32 845	34 360	35 948	32 533
Additional 1 kg	1 153	1 556	1 980	2 246	2 385	2 527	1 980
30	45 093	57 113	72 405	80 570	85 016	89 435	74 538
Additional 5 kg	2 300	2 830	4 385	5 051	5 341	5 474	4 385
50	54 293	68 433	89 945	100 774	106 380	111 331	92 078
Additional 5 kg	2 305	2 830	4 388	5 055	5 327	5 474	4 385
70	62 110	84 105	118 715	138 524	158 400	178 150	118 717
Rate per kg (multiply by total shipment weight)							
71 +	887	1 202	1 695	1 979	2 263	2 545	1 695

## FedEx® Regional Economy Freight (REF)

WEIGHT (KG)	ZONE R	ZONE S	ZONE T/Y	ZONE U	ZONE V	ZONE W
	HUF	HUF	HUF	HUF	HUF	HUF
Rate per kg (multiply by total shipment weight)						
68-99	887	1 202	1 695	1 979	2 263	2 545
100-299	887	1 202	1 695	1 979	2 263	2 545
300-499	887	1 202	1 695	1 979	2 263	2 545
500-999	887	1 202	1 695	1 979	2 263	2 545
1 000 +	887	1 202	1 695	1 979	2 263	2 545

FedEx Regional Economy Freight shipments must be properly palletized and shrink-wrapped. See the packaging guidelines on [fedex.com](https://www.fedex.com). Any shipment with a weight between any of the above weight bands will be charged at the higher weight band rate. FedEx Regional Economy and FedEx Regional Economy Freight are our intra-Europe economy services and are available to selected customers only. For further information, please contact your local Sales Representative.



## FedEx International Economy® (IE)

WEIGHT (KG)	ZONE R	ZONE T	ZONE U	ZONE V	ZONE W	ZONE X
	HUF	HUF	HUF	HUF	HUF	HUF
<b>0,5</b>	16 034	23 398	24 763	25 639	26 606	28 636
<b>1</b>	16 034	23 398	24 763	25 639	26 606	28 636
<b>1,5</b>	16 034	23 398	24 763	25 639	26 606	28 636
<b>2</b>	16 034	23 398	24 763	25 639	26 606	28 636
<b>2,5</b>	16 034	23 398	24 763	25 639	26 606	28 636
<b>3</b>	16 034	23 398	24 763	25 639	26 606	28 636
<b>3,5</b>	16 034	23 398	24 763	25 639	26 606	28 636
<b>4</b>	16 034	23 398	24 763	25 639	26 606	28 636
<b>4,5</b>	16 034	23 398	24 763	25 639	26 606	28 636
<b>5</b>	16 034	23 398	24 763	25 639	26 606	28 636
<b>5,5</b>	17 233	25 226	26 746	27 771	28 934	32 956
<b>6</b>	17 233	25 226	26 746	27 771	28 934	32 956
<b>6,5</b>	18 433	26 944	28 730	29 901	31 191	37 276
<b>7</b>	18 433	26 944	28 730	29 901	31 191	37 276
<b>7,5</b>	19 632	28 661	30 713	32 031	33 448	41 597
<b>8</b>	19 632	28 661	30 713	32 031	33 448	41 597
<b>8,5</b>	20 832	30 379	32 697	34 161	35 704	45 917
<b>9</b>	20 832	30 379	32 697	34 161	35 704	45 917
<b>9,5</b>	22 032	32 096	34 680	36 291	37 961	50 237
<b>10</b>	22 032	32 096	34 680	36 291	37 961	50 237
Additional 1 kg	1 218	2 093	2 372	2 503	2 652	4 942
<b>30</b>	46 402	73 959	82 113	86 361	91 006	149 069
Additional 5 kg	2 378	4 537	5 284	5 724	5 753	9 519
<b>50</b>	55 914	92 109	103 251	109 255	114 018	187 142
Additional 5 kg	2 423	4 617	5 274	5 501	5 759	10 263
<b>70,5</b>	67 489	115 299	135 164	143 255	159 930	241 488
Rate per kg (multiply by total shipment weight)						
<b>71-99</b>	951	1 810	2 113	2 415	2 725	3 787
<b>100-299</b>	951	1 810	2 113	2 415	2 725	3 787
<b>300-499</b>	951	1 810	2 113	2 415	2 725	3 787
<b>500-999</b>	951	1 810	2 113	2 415	2 725	3 787
<b>1 000 +</b>	951	1 810	2 113	2 415	2 725	3 787

## FedEx International Economy® Freight (IEF)

WEIGHT (KG)	ZONE R	ZONE T	ZONE U	ZONE V	ZONE W	ZONE X
	HUF	HUF	HUF	HUF	HUF	HUF
Rate per kg (multiply by total shipment weight)						
<b>68-99</b>	986	1 899	2 216	2 531	2 849	3 957
<b>100-299</b>	986	1 899	2 216	2 531	2 849	3 957
<b>300-499</b>	986	1 899	2 216	2 531	2 849	3 957
<b>500-999</b>	986	1 899	2 216	2 531	2 849	3 957
<b>1 000 +</b>	986	1 899	2 216	2 531	2 849	3 957

Shipments must be properly palletized and shrink-wrapped. See the packaging guidelines on [fedex.com](https://www.fedex.com). Any shipment with a weight between any of the above weight bands will be charged at the higher weight band rate. FedEx International Economy and FedEx International Economy Freight rates may be different if FedEx® Regional Economy and FedEx® Regional Economy Freight are available to you.

FedEx offers a range of solutions to suit your timing and budget. Choose one of our express services with different options of delivery time during the day for your import shipments. Or select an economy service and choose a suitable delivery date, while saving on your costs.

# WORLD

## URGENT\*

- IPE** ▶ FedEx International Priority® Express
- IP** ▶ FedEx International Priority®
- IPF** ▶ FedEx International Priority® Freight

## LESS URGENT\*

- IE** ▶ FedEx International Economy®
- IEF** ▶ FedEx International Economy® Freight

ORIGIN	ZONE	IPE	IP	IPF	IE	IEF
Algeria	C	✓	✓	✓	-	-
Angola	E	✓	✓	✓	-	-
Anguilla	D	✓	✓	-	✓	-
Antigua & Barbuda	D	✓	✓	-	✓	-
Argentina	D	✓	✓	✓	✓	✓
Armenia	C	✓	✓	-	-	-
Aruba	D	✓	✓	-	✓	-
Australia	G	✓	✓	✓	✓	✓
Azerbaijan	C	✓	✓	-	-	-
Bahamas	D	✓	✓	✓	✓	✓
Bahrain	C	✓	✓	✓	✓	✓
Bangladesh	C	✓	✓	✓	✓	✓
Barbados	D	✓	✓	✓	✓	✓
Belize	D	✓	✓	-	-	-
Benin	E	✓	✓	-	-	-
Bermuda	D	✓	✓	✓	✓	✓
Bhutan	C	✓	✓	-	-	-
Bolivia	D	✓	✓	-	✓	-
Bonaire, Saba, St. Eustatius	D	✓	✓	-	✓	-
Botswana	E	✓	✓	✓	✓	✓
Brazil	D	✓	✓	✓	✓	✓
Brunei	C	✓	✓	-	-	-
Burkina Faso	E	✓	✓	-	-	-
Burundi	E	✓	✓	✓	-	-
Cambodia	B	✓	✓	✓	✓	✓
Cameroon	E	✓	✓	-	-	-
Canada	A	✓	✓	✓	✓	✓
Cape Verde	E	✓	✓	-	-	-
Cayman Islands	D	✓	✓	-	✓	-
Chad	E	✓	✓	-	-	-
Chile	D	✓	✓	✓	✓	✓
China	F	✓	✓	✓	✓	✓
Colombia	D	✓	✓	✓	✓	✓
Congo	E	✓	✓	-	-	-
Congo, Dem. Rep. of	E	✓	✓	-	-	-
Costa Rica	D	✓	✓	✓	✓	✓
Curacao	D	✓	✓	-	✓	-
Djibouti	E	✓	✓	✓	-	-
Dominica	D	✓	✓	-	✓	-
Dominican Republic	D	✓	✓	✓	✓	✓
East Timor	B	✓	✓	-	-	-
Ecuador	D	✓	✓	✓	✓	✓
Egypt	C	✓	✓	✓	✓	-
El Salvador	D	✓	✓	✓	✓	✓
Eritrea	E	✓	✓	-	-	-
Eswatini (Swaziland)	E	✓	✓	✓	✓	✓
Ethiopia	E	✓	✓	✓	✓	✓
Fiji	E	✓	✓	-	-	-
French Guiana	D	✓	✓	-	✓	-
French Polynesia	E	✓	✓	-	-	-
Gabon	E	✓	✓	-	-	-
Gambia	E	✓	✓	-	-	-
Georgia	C	✓	✓	-	-	-

ORIGIN	ZONE	IPE	IP	IPF	IE	IEF
Ghana	E	✓	✓	✓	-	-
Grenada	D	✓	✓	✓	✓	-
Guadeloupe	D	✓	✓	-	✓	-
Guam	E	✓	✓	✓	-	-
Guatemala	D	✓	✓	✓	✓	✓
Guinea	E	✓	✓	-	-	-
Guyana	D	✓	✓	-	✓	-
Haiti	D	✓	✓	-	✓	-
Honduras	D	✓	✓	✓	✓	✓
Hong Kong SAR, China	F	✓	✓	✓	✓	✓
India	C	✓	✓	✓	✓	✓
Indonesia	B	✓	✓	✓	✓	✓
Iraq	E	✓	✓	✓	-	-
Israel	C	✓	✓	✓	✓	✓
Ivory Coast	E	✓	✓	✓	-	-
Jamaica	D	✓	✓	✓	✓	✓
Japan	I	✓	✓	✓	✓	✓
Jordan	C	✓	✓	✓	-	-
Kazakhstan	E	✓	✓	✓	-	-
Kenya	E	✓	✓	✓	✓	✓
Korea, South	B	✓	✓	✓	✓	✓
Kuwait	C	✓	✓	✓	✓	✓
Kyrgyzstan	E	✓	✓	✓	-	-
Lebanon	C	✓	✓	✓	✓	-
Lesotho	E	✓	✓	-	-	-
Liberia	E	✓	✓	-	-	-
Libya	C	✓	✓	✓	-	-
Macao SAR, China	B	✓	✓	✓	✓	✓
Madagascar	E	✓	✓	✓	-	-
Malawi	E	✓	✓	✓	✓	✓
Malaysia	B	✓	✓	✓	✓	✓
Maldives	E	✓	✓	-	-	-
Mali	E	✓	✓	✓	-	-
Marshall Islands	E	✓	✓	-	-	-
Martinique	D	✓	✓	-	✓	-
Mauritania	E	✓	✓	-	-	-
Mauritius	E	✓	✓	✓	-	-
Mexico	D	✓	✓	✓	✓	✓
Micronesia	E	✓	✓	-	-	-
Mongolia	E	✓	✓	-	-	-
Montserrat	D	✓	✓	-	✓	-
Morocco	C	✓	✓	✓	-	-
Mozambique	E	✓	✓	-	-	-
Namibia	E	✓	✓	✓	✓	✓
Nepal	C	✓	✓	✓	-	-
New Caledonia	E	✓	✓	-	-	-
New Zealand	G	✓	✓	✓	✓	✓
Nicaragua	D	✓	✓	✓	✓	✓
Niger	E	✓	✓	✓	-	-
Nigeria	E	✓	✓	✓	✓	✓
Oman	C	✓	✓	✓	✓	✓
Pakistan	C	✓	✓	✓	-	-
Palau	E	✓	✓	-	-	-

ORIGIN	ZONE	IPE	IP	IPF	IE	IEF
Palestine Authority	C	✓	✓	-	-	-
Panama	D	✓	✓	✓	✓	✓
Papua New Guinea	E	✓	✓	-	✓	-
Paraguay	D	✓	✓	-	✓	-
Peru	D	✓	✓	✓	✓	✓
Philippines	B	✓	✓	✓	✓	✓
Puerto Rico	D	-	✓	✓	✓	✓
Qatar	C	✓	✓	✓	✓	-
Reunion Island	E	✓	✓	-	-	-
Rwanda	E	✓	✓	✓	-	-
Saipan	E	✓	✓	-	-	-
Samoa, West	E	✓	✓	-	-	-
Saudi Arabia	C	✓	✓	✓	✓	✓
Senegal	E	✓	✓	✓	-	-
Seychelles	E	✓	✓	✓	-	-
Singapore	I	✓	✓	✓	✓	✓
South Africa	D	✓	✓	✓	✓	✓
Sri Lanka	C	✓	✓	✓	-	-
St. Kitts & Nevis	D	✓	✓	✓	✓	✓
St. Lucia	D	✓	✓	-	-	-
St. Maarten (NL)	D	✓	✓	-	✓	-
St. Martin (FR)	D	✓	✓	-	✓	-
St. Vincent	D	✓	✓	-	✓	-
Suriname	D	✓	✓	-	-	-
Taiwan, China	B	✓	✓	✓	✓	✓
Tanzania	E	✓	✓	✓	-	-
Thailand	B	✓	✓	✓	✓	✓
Togo	E	✓	✓	-	-	-
Tonga	E	✓	✓	-	-	-
Trinidad & Tobago	D	✓	✓	✓	✓	✓
Tunisia	C	✓	✓	✓	✓	✓
Turks & Caicos Islands	D	✓	✓	-	✓	-
Uganda	E	✓	✓	✓	-	-
United Arab Emirates	C	✓	✓	✓	✓	✓
Uruguay	D	✓	✓	✓	✓	✓
USA	H	✓	✓	✓	✓	✓
Uzbekistan	E	✓	✓	✓	✓	✓
Vietnam	B	✓	✓	✓	✓	✓
Virgin Islands (GB)	D	✓	✓	-	✓	-
Virgin Islands (USA)	D	✓	✓	✓	✓	✓
Zambia	E	✓	✓	✓	✓	✓
Zimbabwe	E	✓	✓	✓	-	-

✓ Service available - Service not available

The service availability described in this document might vary by postal code and throughout the year.

\* For FedEx International First® and FedEx® International Connect Plus zoning information, please refer to the dedicated FIF and FICP documents.





Benefit from our  
express delivery  
by mid-day\*

## FedEx International Priority® Express (IPE)

WEIGHT (KG)	ZONE A/H	ZONE B/I	ZONE C	ZONE D	ZONE E	ZONE F	ZONE G
	HUF	HUF	HUF	HUF	HUF	HUF	HUF

### Rates when using FedEx® Envelope/FedEx® Pak (0,5 - 2,5 kg)

FedEx Envelope							
0,5	30 172	40 552	46 242	48 122	49 088	38 454	43 775
FedEx Pak							
0,5	31 943	43 020	48 955	50 949	51 675	40 787	46 433
1	35 341	47 716	53 726	56 447	59 000	45 314	51 060
1,5	38 739	52 412	58 497	61 945	66 325	49 841	55 687
2	42 137	57 108	63 268	67 443	73 650	54 368	60 314
2,5	45 535	61 804	68 039	72 941	80 975	58 895	64 941

### Rates when using FedEx® 10kg and 25kg Box

FedEx 10kg Box							
≤ 10	72 432	99 755	107 442	117 694	137 537	95 437	103 806
Additional kg	7 750	10 162	10 018	11 400	14 064	9 024	10 176
FedEx 25kg Box							
≤ 25	147 940	200 485	207 622	231 774	280 633	187 381	205 030
Additional kg	7 802	10 530	10 512	13 674	14 302	8 894	10 814

### Rates when using other packaging material

0,5	33 462	45 272	51 389	53 280	54 684	42 927	48 575
1	37 029	50 221	56 504	59 158	62 259	47 711	53 596
1,5	40 596	55 170	61 619	65 036	69 834	52 495	58 617
2	44 163	60 119	66 734	70 914	77 409	57 279	63 638
2,5	47 730	65 068	71 849	76 792	84 984	62 063	68 659
3	51 220	70 017	76 964	82 690	92 559	66 847	73 680
3,5	54 710	74 966	82 079	88 586	100 134	71 631	78 701
4	58 200	79 915	87 194	94 482	107 709	76 415	83 722
4,5	61 690	84 864	92 309	100 378	115 284	81 199	88 743
5	65 180	89 813	97 424	106 274	122 859	85 983	93 764
5,5	68 606	94 784	102 433	111 984	130 198	90 712	98 785
6	72 432	99 755	107 442	117 694	137 537	95 437	103 806
6,5	76 058	104 726	112 451	123 404	144 876	100 162	108 827
7	79 684	109 697	117 460	129 114	152 215	104 887	113 848
7,5	83 310	114 668	122 469	134 824	159 554	109 612	118 869
8	86 936	119 639	127 478	140 534	166 893	114 337	123 890
8,5	90 562	124 610	132 487	146 244	174 232	119 062	128 911
9	94 188	129 581	137 496	151 954	181 571	123 787	133 932
9,5	97 814	134 552	142 505	157 664	188 910	128 512	138 953
10	101 440	139 523	147 514	163 374	196 249	133 237	143 974
Additional 0,5 kg	3 875	5 082	5 009	5 700	7 032	4 512	5 088
21	186 717	251 470	257 963	289 915	351 072	232 441	256 234
Additional 0,5 kg	3 901	5 265	5 256	6 837	7 151	4 447	5 407
30	256 935	346 240	352 571	412 981	479 790	312 487	353 560
Additional 0,5 kg	3 924	5 557	5 414	7 017	7 465	4 465	5 576
45	374 655	512 950	514 991	623 491	703 740	446 437	520 840
Additional 0,5 kg	3 924	5 557	5 414	7 017	7 465	4 465	5 576
70,5	574 779	796 357	791 105	981 358	1 084 455	674 152	805 216

Rate per kg (multiply by total shipment weight)							
71-99	8 475	11 835	11 971	14 676	16 381	11 362	12 600
100-299	8 475	11 835	11 971	14 676	16 381	11 362	12 600
300-499	8 475	11 835	11 971	14 676	16 381	11 362	12 600
500-999	8 475	11 835	11 971	14 676	16 381	11 362	12 600
1 000+	8 475	11 835	11 971	14 676	16 381	11 362	12 600

Any shipment with a weight between any of the above weight bands will be charged at the higher weight band rate.

\*Availability of services and transit times may vary depending on origin and destination. Terms and conditions apply – visit [fedex.com](https://www.fedex.com) for full details of our services.



## FedEx International Priority® (IP)

WEIGHT (KG)	ZONE A/H	ZONE B/I	ZONE C	ZONE D	ZONE E	ZONE F	ZONE G
	HUF	HUF	HUF	HUF	HUF	HUF	HUF

### Rates when using FedEx® Envelope/FedEx® Pak (0,5 - 2,5 kg)

FedEx Envelope							
<b>0,5</b>	28 735	38 621	44 040	45 830	46 750	36 622	41 690
FedEx Pak							
<b>0,5</b>	30 422	40 971	46 624	48 523	49 215	38 845	44 221
<b>1</b>	33 659	45 443	51 168	53 759	56 191	43 157	48 628
<b>1,5</b>	36 896	49 915	55 712	58 995	63 167	47 469	53 035
<b>2</b>	40 133	54 387	60 256	64 231	70 143	51 781	57 442
<b>2,5</b>	43 370	58 859	64 800	69 467	77 119	56 093	61 849

### Rates when using FedEx® 10kg and 25kg Box

FedEx 10kg Box							
<b>≤ 10kg</b>	68 980	95 013	102 322	112 092	130 985	90 888	98 853
Additional kg	7 380	9 676	9 542	10 862	13 394	8 594	9 696
FedEx 25kg Box							
<b>≤ 25kg</b>	140 884	190 949	197 742	220 740	267 261	178 460	195 257
Additional kg	7 432	10 028	10 012	13 022	13 620	8 470	10 298

### Rates when using other packaging material

<b>0,5</b>	31 869	43 117	48 941	50 742	52 080	40 882	46 262
<b>1</b>	35 267	47 831	53 812	56 341	59 294	45 438	51 043
<b>1,5</b>	38 664	52 545	58 683	61 940	66 508	49 994	55 824
<b>2</b>	42 061	57 259	63 554	67 539	73 722	54 550	60 605
<b>2,5</b>	45 458	61 973	68 425	73 138	80 936	59 106	65 386
<b>3</b>	48 781	66 687	73 296	78 754	88 150	63 662	70 167
<b>3,5</b>	52 104	71 401	78 167	84 370	95 364	68 218	74 948
<b>4</b>	55 427	76 115	83 038	89 986	102 578	72 774	79 729
<b>4,5</b>	58 750	80 829	87 909	95 602	109 792	77 330	84 510
<b>5</b>	62 073	85 543	92 780	101 218	117 006	81 886	89 291
<b>5,5</b>	65 527	90 278	97 551	106 655	123 996	86 387	94 072
<b>6</b>	68 980	95 013	102 322	112 092	130 985	90 888	98 853
<b>6,5</b>	72 433	99 748	107 093	117 529	137 974	95 389	103 634
<b>7</b>	75 886	104 483	111 864	122 966	144 963	99 890	108 415
<b>7,5</b>	79 339	109 218	116 635	128 403	151 952	104 391	113 196
<b>8</b>	82 792	113 953	121 406	133 840	158 941	108 892	117 977
<b>8,5</b>	86 245	118 688	126 177	139 277	165 930	113 393	122 758
<b>9</b>	89 698	123 423	130 948	144 714	172 919	117 894	127 539
<b>9,5</b>	93 151	128 158	135 719	150 151	179 908	122 395	132 320
<b>10</b>	96 604	132 893	140 490	155 588	186 897	126 896	137 101
Additional 0,5 kg	3 690	4 838	4 771	5 433	6 697	4 297	4 850
<b>21</b>	177 817	239 510	245 687	276 112	334 347	221 368	244 020
Additional 0,5 kg	3 716	5 014	5 006	6 511	6 810	4 235	5 149
<b>30</b>	244 705	329 762	335 795	393 310	456 927	297 598	336 702
Additional 0,5 kg	3 737	5 292	5 157	6 691	7 110	4 252	5 318
<b>45</b>	356 815	488 522	490 505	593 779	670 227	425 158	496 010
Additional 0,5 kg	3 737	5 292	5 157	6 682	7 110	4 252	5 310
<b>70,5</b>	547 402	758 414	753 512	934 561	1 032 837	642 010	766 820
Rate per kg (multiply by total shipment weight)							
<b>71-99</b>	8 071	11 272	11 401	13 978	15 601	10 821	12 000
<b>100-299</b>	8 071	11 272	11 401	13 978	15 601	10 821	12 000
<b>300-499</b>	8 071	11 272	11 401	13 978	15 601	10 821	12 000
<b>500-999</b>	8 071	11 272	11 401	13 978	15 601	10 821	12 000
<b>1 000 +</b>	8 071	11 272	11 401	13 978	15 601	10 821	12 000

## FedEx International Priority® Freight (IPF)

WEIGHT (KG)	ZONE A/H	ZONE B/I	ZONE C	ZONE D	ZONE E	ZONE F	ZONE G
	HUF	HUF	HUF	HUF	HUF	HUF	HUF
<b>68</b>	583 372	807 228	817 972	955 536	1 110 984	772 208	854 556
<b>68,5</b>	591 951	819 099	830 001	969 588	1 127 322	783 564	867 123
<b>69</b>	591 951	819 099	830 001	969 588	1 127 322	783 564	867 123
<b>69,5</b>	600 530	830 970	842 030	983 640	1 143 660	794 920	879 690
<b>70</b>	600 530	830 970	842 030	983 640	1 143 660	794 920	879 690
<b>70,5</b>	609 109	842 841	854 059	997 692	1 159 998	806 276	892 257
Rate per kg (multiply by total shipment weight)							
<b>71-99</b>	8 579	11 871	12 029	14 052	16 338	11 356	12 567
<b>100-299</b>	8 579	11 871	12 029	14 052	16 338	11 356	12 567
<b>300-499</b>	8 579	11 871	12 029	14 052	16 338	11 356	12 567
<b>500-999</b>	8 579	11 871	12 029	14 052	16 338	11 356	12 567
<b>1 000 +</b>	8 579	11 871	12 029	14 052	16 338	11 356	12 567

Shipments must be properly palletized and shrink-wrapped. See the packaging guidelines on [fedex.com](https://www.fedex.com). Any shipment with a weight between any of the above weight bands will be charged at the higher weight band rate.

\* Availability of services and transit times may vary depending on origin and destination. Terms and conditions apply – visit [fedex.com](https://www.fedex.com) for full details of our services.





When timing is everything, use our early morning delivery services\* for your worldwide shipments



## FedEx International First® (FIF)

WEIGHT (KG)	USA HUF	Israel HUF
<b>Rates when using FedEx® Envelope/FedEx® Pak (0,5 - 2,5 kg)</b>		
FedEx Envelope		
<b>0,5</b>	52 586	68 672
FedEx Pak		
<b>0,5</b>	54 360	71 388
<b>1</b>	58 612	77 358
<b>1,5</b>	62 864	83 328
<b>2</b>	67 116	89 298
<b>2,5</b>	71 368	95 268
<b>Rates when using other packaging material</b>		
<b>0,5</b>	55 881	73 824
<b>1</b>	60 343	80 223
<b>1,5</b>	64 805	86 622
<b>2</b>	69 267	93 021
<b>2,5</b>	73 729	99 420
<b>3</b>	78 094	105 818
<b>3,5</b>	82 459	112 216
<b>4</b>	86 824	118 614
<b>4,5</b>	91 189	125 012
<b>5</b>	95 554	131 410
<b>5,5</b>	100 092	137 677
<b>6</b>	104 630	143 944
<b>6,5</b>	109 168	150 211
<b>7</b>	113 706	156 478
<b>7,5</b>	118 244	162 745
<b>8</b>	122 782	169 012
<b>8,5</b>	127 320	175 279
<b>9</b>	131 858	181 546
<b>9,5</b>	136 396	187 813
<b>10</b>	140 934	194 080
Additional 0,5 kg	4 848	6 267
<b>21</b>	247 622	332 265
Additional 0,5 kg	4 880	6 578
<b>30</b>	335 462	450 669
Additional 0,5 kg	4 918	6 774
<b>45</b>	482 770	653 894
Additional 0,5 kg	4 910	6 774
<b>70,5</b>	733 180	999 368
<b>Rate per kg (multiply by total shipment weight)</b>		
<b>71-99</b>	10 526	14 869
<b>100-299</b>	10 526	14 869
<b>300-499</b>	10 526	14 869
<b>500-999</b>	10 526	14 869
<b>1 000 +</b>	10 526	14 869

Shipments must be properly packed. See the packaging guidelines on [fedex.com](https://www.fedex.com). Any shipment with a weight between any of the above weight bands will be charged at the higher weight band rate.

\* Availability of services and transit times may vary depending on origin and destination. Terms and conditions apply – visit [fedex.com](https://www.fedex.com) for full details of our services.



Save on your less urgent shipments with our economy services

## FedEx International Economy® (IE)

WEIGHT (KG)	ZONE A/H	ZONE B/I	ZONE C	ZONE D	ZONE E	ZONE F	ZONE G
	HUF	HUF	HUF	HUF	HUF	HUF	HUF
0,5	28 694	42 275	44 083	45 576	46 492	40 081	45 356
1	31 758	46 893	48 447	50 626	52 938	44 549	50 043
1,5	34 822	51 511	52 810	55 676	59 384	49 017	54 730
2	37 886	56 129	57 173	60 726	65 830	53 485	59 417
2,5	40 950	60 747	61 536	65 776	72 276	57 953	64 104
3	43 986	65 365	65 899	70 939	78 722	62 421	68 791
3,5	47 022	69 983	70 262	76 101	85 168	66 889	73 478
4	50 058	74 601	74 625	81 263	91 614	71 357	78 165
4,5	53 094	79 219	78 988	86 425	98 060	75 825	82 852
5	56 130	83 837	83 351	91 587	104 506	80 293	87 539
5,5	59 182	88 491	87 687	96 312	110 961	84 704	92 226
6	62 233	93 145	92 023	101 037	117 416	89 115	96 913
6,5	65 284	97 799	96 359	105 762	123 871	93 526	101 600
7	68 335	102 453	100 695	110 487	130 326	97 937	106 287
7,5	71 386	107 107	105 031	115 212	136 781	102 348	110 974
8	74 437	111 761	109 367	119 937	143 236	106 759	115 661
8,5	77 488	116 415	113 703	124 662	149 691	111 170	120 348
9	80 539	121 069	118 039	129 387	156 146	115 581	125 035
9,5	83 590	125 723	122 375	134 112	162 601	119 992	129 722
10	86 641	130 377	126 711	138 837	169 056	124 403	134 409
Additional 0,5 kg	3 349	3 505	4 336	5 067	5 938	3 069	3 497
21	160 193	208 355	222 140	250 730	299 969	192 532	212 194
Additional 0,5 kg	3 223	4 373	4 372	5 546	6 215	3 680	4 468
30	218 207	287 069	300 836	350 558	411 839	258 772	292 618
Additional 0,5 kg	3 467	4 595	4 787	6 141	6 356	3 698	4 622
45	322 217	424 919	444 446	534 701	602 519	369 712	431 278
Additional 0,5 kg	3 467	4 595	4 787	6 138	6 356	3 698	4 622
70,5	499 034	659 264	688 583	847 739	926 675	558 310	667 000
Rate per kg (multiply by total shipment weight)							
71-99	7 313	9 801	10 359	12 684	14 186	9 408	10 434
100-299	7 313	9 801	10 359	12 684	14 186	9 408	10 434
300-499	7 313	9 801	10 359	12 684	14 186	9 408	10 434
500-999	7 313	9 801	10 359	12 684	14 186	9 408	10 434
1 000 +	7 313	9 801	10 359	12 684	14 186	9 408	10 434

## FedEx International Economy® Freight (IEF)

WEIGHT (KG)	ZONE A/H	ZONE B/I	ZONE C	ZONE D	ZONE E	ZONE F	ZONE G
	HUF	HUF	HUF	HUF	HUF	HUF	HUF
Rate per kg (multiply by total shipment weight)							
68-99	7 578	10 323	10 825	13 148	14 704	9 875	10 928
100-299	7 578	10 323	10 825	13 148	14 704	9 875	10 928
300-499	7 578	10 323	10 825	13 148	14 704	9 875	10 928
500-999	7 578	10 323	10 825	13 148	14 704	9 875	10 928
1 000 +	7 578	10 323	10 825	13 148	14 704	9 875	10 928

Shipments must be properly palletized and shrink-wrapped. See the packaging guidelines on [fedex.com](https://www.fedex.com). Any shipment with a weight between any of the above weight bands will be charged at the higher weight band rate. FedEx International Economy and FedEx International Economy Freight rates may be different if FedEx® Regional Economy and FedEx® Regional Economy Freight are available to you.